

# Turtle Times

April 2020

Volume X, Issue 4



# Happy Easter!



## Turtle Facts



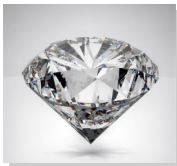
The painted turtle (*Chrysemys picta*) is the most widespread native turtle of North America. It lives in slow-moving fresh waters, from southern Canada to northern Mexico, and from the Atlantic to the Pacific. Is the only species of the genus *Chrysemys*, which is part of the pond turtle family Emydidae. Fossils show that the painted turtle existed 15 million years ago.

## April Flower



Daisy

## April Stone



Diamond

## Turtle Creek is Energy Star Certified.



The EPA Energy Star certification is earned by commercial buildings that use an average of 35% less energy than typical buildings and also release 35% less carbon dioxide into the atmosphere.

## EASTER EGG HUNT!!



Let's have some Easter fun!

See if you can find all 8 Easter eggs that are hidden throughout the Turtle Times!

Good Luck!



\*eggs in the Easter baskets, the ones at the top of page 2 or the ones in this ad do NOT count



## April Holidays

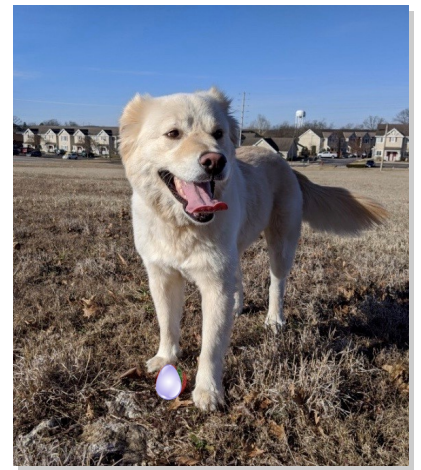
April 10 - Good Friday  
April 12 - Easter



to all Turtle Creek residents celebrating a birthday in April!

## Pet of the Month

Keoni



Mary is a 5 year old Golden Retriever who is originally from Atlanta and loves making new furfriends. She's quite the foodie who loves trying new foods, and on the weekend after a long week of work, she enjoys hiking and playing catch. She always has a smile on her face and is quite the southern belle.

**We want your photos, pet pictures & recipes! Send to [hollie@turtlecreekbranson.com](mailto:hollie@turtlecreekbranson.com)**



## Turtle Creek Staff

Doris Adams Property Manager  
Hollie Sturms Resident Services  
Brandon Mooney Facilities Supervisor  
Dusty Hughey Facilities

### Safe House

The Turtle Creek Office is designated as a Safe House during business hours. This is for children locked out or who feel in danger. This is not a baby sitting service.



**Turtle Up!**



Turtle Creek Apartments  
159 Turtle Creek Drive  
Branson, MO 65616

Phone: 417-332-8878  
Fax: 417-544-0912  
E-mail: [info@turtlecreekbranson.com](mailto:info@turtlecreekbranson.com)

## Let's Get Social!



[turtlecreekbranson.com](http://turtlecreekbranson.com)



[Turtle Creek Apartments](https://www.facebook.com/TurtleCreekApartments)



[@TurtleUp](https://twitter.com/TurtleUp)



[turtlecreekbranson](https://www.instagram.com/turtlecreekbranson)



[Turtle Creek Branson](https://www.pinterest.com/TurtleCreekBranson)



[TurtleCreekBranson](https://www.youtube.com/TurtleCreekBranson)



[TurtleCreek-Branson](https://www.snapchat.com/add/TurtleCreek-Branson)



[turtle-creek](https://www.turtle-creek.com)



## COVID-19 PREVENTION RECOMMENDATIONS

WASH YOUR HANDS FOR 20 SECONDS

AVOID TOUCHING YOUR EYES, NOSE, OR MOUTH WITH UN-WASHED HANDS

STAY HOME WHILE YOU ARE SICK AND AVOID CLOSE CONTACT WITH OTHERS

COVER YOUR MOUTH/NOSE WITH A TISSUE OR SLEEVE WHEN COUGHING OR SNEEZING

\*INFORMATION FOUND ON MISSOURI DHSS & TANAY COUNTY HEALTH DEPARTMENT

### Ingredient

- 1/4 cup butter
- 1 cup milk chocolate chips
- 1 tsp vanilla
- 9 cups Chex cereal
- 2 cups powdered sugar
- 1 cup Easter M&Ms
- spring/Easter sprinkles
- 1/2 cup creamy peanut butter



### **Easter Bunny Chow**

### Directions

- Combine peanut butter, butter, and chocolate chips in a microwavable bowl.
- Microwave for 1 minute, then stir until melted and creamy.
- Add vanilla and stir.
- In a large bowl with a cover, pour chocolate mixture over cereal. Cover and shake until cereal is evenly coated.
- Sprinkle powdered sugar over cereal. Cover and shake until evenly coated.
- Add M&Ms and sprinkles of your choice.

If you are laid off in the slow season, why not pay 12 months rent in 9 months? When lay off time comes, you have 3 months rent already paid. Now is the time to start when the season is up and booming. Call the leasing office for more information.

Size Apt.	Per Month	12 Mth in 9	12 Mth in 10	12 Months
Studio	\$590.00	\$787.00	\$708.00	\$7,080.00
1 Bdrm	\$690.00	\$920.00	\$828.00	\$8,280.00
2 Bdrm	\$790.00	\$1,053.00	\$948.00	\$9,480.00
3 Bdrm	\$890.00	\$1,187.00	\$1,068.00	\$10,680.00