

# Turtle Times

May 2020

Volume X, Issue 5



## Happy Mother's Day



### Turtle Facts



The alligator snapping turtle is the largest species of turtle found in Missouri. Their upper shell measures 15-26 inches, and their weight ranges from 35-150 pounds. They have a noticeably large head that terminates in a sharp, strongly hooked beak and a long tail. This species of turtle is predominantly aquatic.

### May Flower



Lily of the Valley

### May Stone

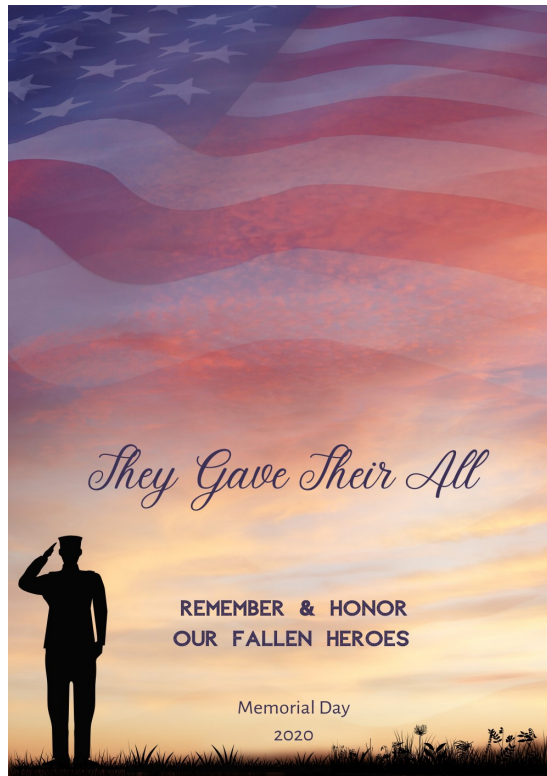


Emerald

### Turtle Creek is Energy Star Certified.



The EPA Energy Star certification is earned by commercial buildings that use an average of 35% less energy than typical buildings and also release 35% less carbon dioxide into the atmosphere.



### May Holidays

May 5 - Cinco De Mayo

May 10 - Mother's Day

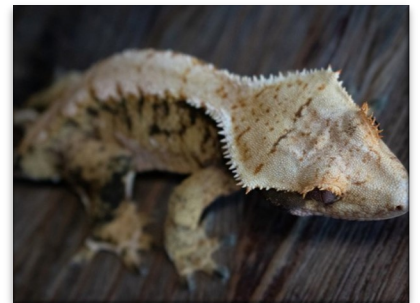
May 25 - Memorial Day



to all Turtle Creek residents celebrating a birthday in May!

### Pet of the Month

Abunai



Abunai is a 2-year-old Crested Gecko. She loves her Dubia roaches dusted with calcium and mango flavored anything! Crested Geckos are nocturnal and spend time hunting for food in the dark.

**We want your photos, pet pictures & recipes! Send to [hollie@turtlecreekbranson.com](mailto:hollie@turtlecreekbranson.com)**



### Turtle Creek Staff

**Doris Adams** Property Manager  
**Hollie Sturms** Resident Services  
**Brandon Mooney** Facilities Supervisor

### Safe House

The Turtle Creek Office is designated as a Safe House during business hours. This is for children locked out or who feel in danger. This is not a baby sitting service.



**Turtle Up!**



Turtle Creek Apartments  
159 Turtle Creek Drive  
Branson, MO 65616

Phone: 417-332-8878  
Fax: 417-544-0912  
E-mail: [info@turtlecreekbranson.com](mailto:info@turtlecreekbranson.com)

## Let's Get Social!



[turtlecreekbranson.com](http://turtlecreekbranson.com)



[Turtle Creek Apartments](https://www.facebook.com/TurtleCreekApartments)



[@TurtleUp](https://twitter.com/TurtleUp)



[turtlecreekbranson](https://www.instagram.com/turtlecreekbranson)



[Turtle Creek Branson](https://www.pinterest.com/TurtleCreekBranson)



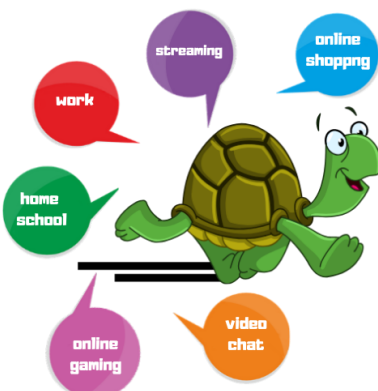
[TurtleCreekBranson](https://www.youtube.com/TurtleCreekBranson)



[TurtleCreek-Branson](https://plus.google.com/TurtleCreek-Branson)



[turtle-creek](https://www.snapchat.com/add/turtle-creek)



Video chat, streaming,  
WFH, and home school  
among our "new normal."  
200Mbps makes all of  
that possible and even  
at the same time...

The best part,  
it's now an included TC  
standard amenity!

## Ingredient

### Crust:

- 2 c crushed pretzels
- 3/4 c butter, melted
- 3 tbsp sugar

### Filling:

- 2 c whipped topping
- 1 pkg (8oz) cream cheese, softened
- 1 cup sugar

### Topping:

- 2 pkgs. (3oz ea.) strawberry gelatin
- 2 c boiling water
- 2 pkgs. (16oz ea.) frozen sweetened sliced strawberries, thawed

## Strawberry Pretzel



Recipe & Photo Credit: [tasteofhome.com](http://tasteofhome.com)

## Dessert

## Directions

- In a bowl, combine the pretzels, butter and sugar. Press into an ungreased 13x9-in. baking dish. Bake at 350° for 10 minutes. Cool on a wire rack.
- For filling, in a small bowl, beat whipped topping, cream cheese and sugar until smooth. Spread over pretzel crust. Refrigerate until chilled.
- For topping, dissolve gelatin in boiling water in a large bowl. Stir in sweetened strawberries; chill until partially set. Carefully spoon over filling. Chill until firm, 4-6 hours. Cut into squares.